

**ECHLIN®****GAS FUEL INJECTION**

## WHAT'S IN YOUR BOX?

### The most advanced, precise Gasoline Fuel Injectors for GDI, Multi-Port and TBI.

With unmatched coverage, NAPA® Echlin® Fuel Injectors are meticulously designed, manufactured, and tested to ensure consistent reliability and performance.

We also offer a full line of related fuel injection components including GDI High-Pressure Fuel Pumps, GDI High-Pressure Fuel Pump Kits, Fuel Pressure Sensors, Fuel Pressure Regulators, Damper Assemblies, Fuel/Water Separator Sensors, O-Ring Kits and more.



### What's inside the Echlin® box... advanced engineering, a brand-new Injector, and over 100 years of experience. What's In Your Box?

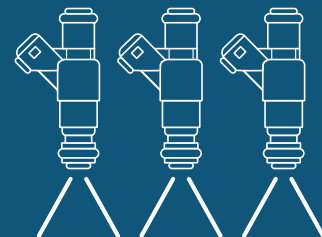
Echlin® Fuel Injectors feature application-specific fuel metering discs to deliver OE-matched fuel flow and spray patterns. This helps optimize fuel atomization for engine performance, reduces emissions and maximizes fuel economy.

**100%**  
NEW, NEVER  
REMANUFACTURED

More than 900 New,  
not remanufactured,  
gasoline fuel injectors

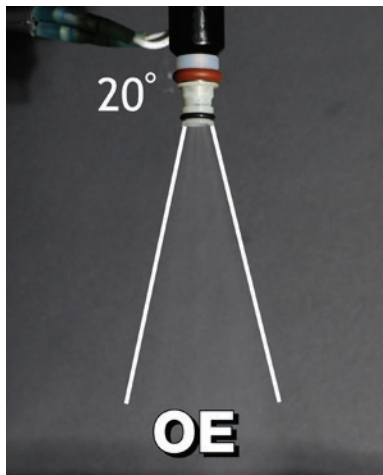


Engineered and manufactured  
in our IATF 16949-certified  
facility in Greenville, SC



NAPA® Echlin® Fuel Injectors are  
advanced flow-matched to  
each specific application for  
balanced fuel delivery

# Fuel Injector Spray Pattern Test



20° OE-specified  
spray pattern



Echlin® matches  
original spray patterns  
for optimal performance  
and fuel economy

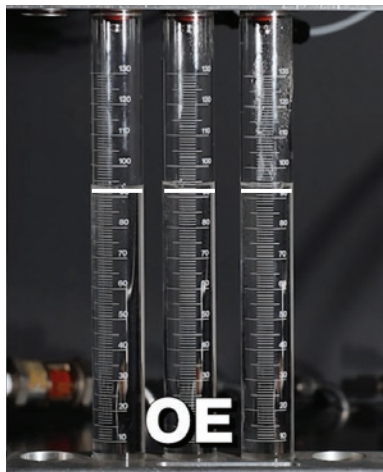


Can result in poor fuel  
atomization, reducing  
engine performance and  
fuel economy



Can result in unburnt fuel  
dripping down the cylinder  
wall, washing away oil and  
damaging the piston rings  
and cylinder wall

# Fuel Injector Flow Rate Test



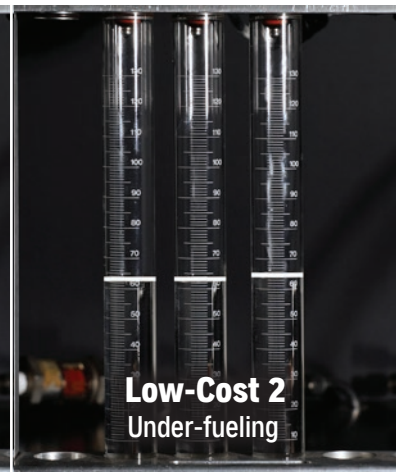
OE-specified  
fuel flow rate



Echlin® Injectors are  
tested and calibrated for  
consistency to optimize  
performance



Inconsistent and prone to  
over-fueling which can  
cause unburnt fuel to be  
sent through the exhaust,  
damaging emissions  
components



A lean condition can lead  
to catastrophic engine  
damage

 Inconsistent spray patterns and flow rates may not illuminate a check engine light, even though damage is occurring.



**ECHLIN®**

**LOOKS RIGHT. FITS RIGHT. PERFORMS RIGHT.**

**NAPAEchlin.com**

NE11523-APR25